



Weekly Construction Progress Report

Grady High School

Week Ending: 08/14/2020

PARRISH
CONSTRUCTION GROUP

Weekly Updates

THIS WEEK

- Form second floor interior column wraps.
- Begin Fireproofing at new addition ground floor.
- Start CMU for Performance gym concession stand door.
- Continue TPO roof install at Performance Gym Roof.
- Install epoxy flooring in performance gym.
- Begin forming second floor shear walls.
- Pouring second floor shear walls.
- Continue MEP overhead on ground floor of new addition.
- Steel erection for third floor.
- Install steel sunshades.

NEXT WEEK – 8.17.2020 – 8.21.2020

- Begin third floor slab on deck prep work.
- Continue Fireproofing at new addition ground floor.
- Begin waterproofing on SE corner of new addition.
- Start CMU walls on ground floor of new addition.
- Start exterior brick work on SE Corner of new addition.
- Continue TPO roof install at Performance Gym Roof.
- Continue MEP overhead on ground floor of new addition.
- Continue Steel Erection for third floor.
- Install structures and grading between Charles Allen and new addition.



Budget & Schedule

BUDGET

Construction Budget

- \$34,900,000.00

Budget Status

- \$ 10,276,463.74

SCHEDULE

Completion Date

- July 29,2021

Schedule Status

- On Schedule



ADDITIONAL INFO

- Scheduled Substantial Completion Date
 - July 29, 2021
- Completed By
 - Alex Johnson, PCG
- Copies To
 - Danny Gutlay, APS
 - Sandra Horton, APS
 - Katy Daugharty, CC
 - Bob Just, CC
 - John Rood, PCG
 - Darrell Bailey, PCG
 - Alex Johnson, PCG
 - Will Henry, PCG
 - Art Cofelice, PCG
 - Travis Disbro, PCG



Photo Updates

Site Overview



Site Overview



Photo Updates

First floor fireproofing



Second floor plumbing rough in.



Photo Updates

Forms for second floor shear walls

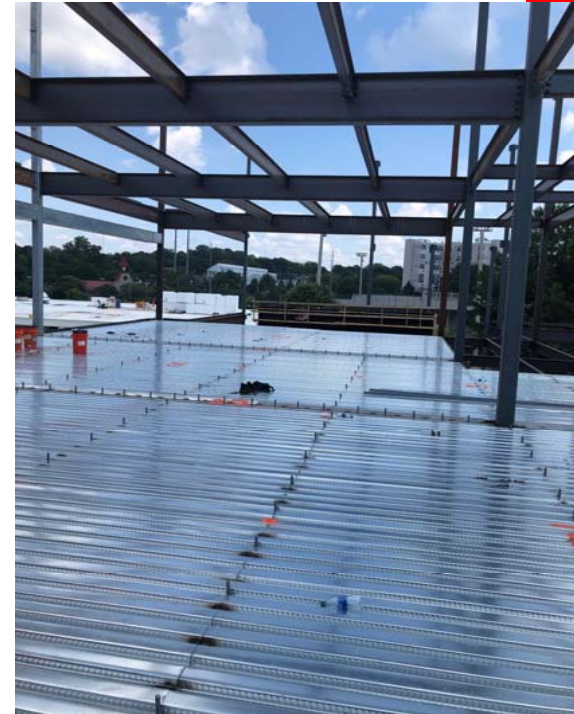


First floor plumbing overhead rough
in



Photo Updates

Epoxy flooring for performance gym
bathrooms



Installing nelson studs for third floor slab
on deck



Photo Updates

HVAC Ductwork Install



HVAC Ductwork Install

